



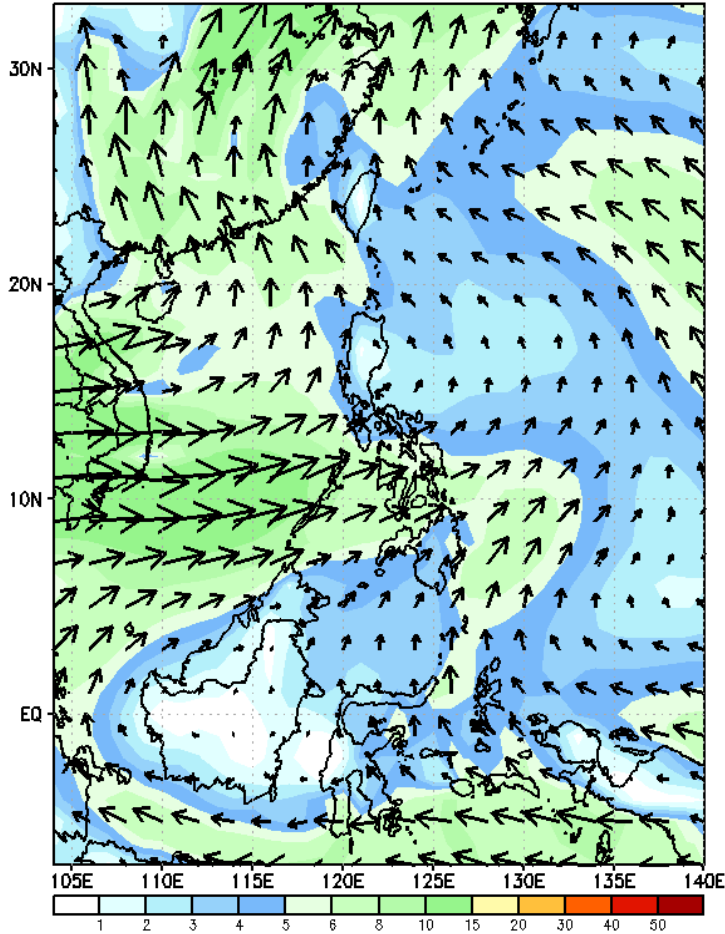
Week 1 & Week 2 Forecast for the Philippines using GEFS Model



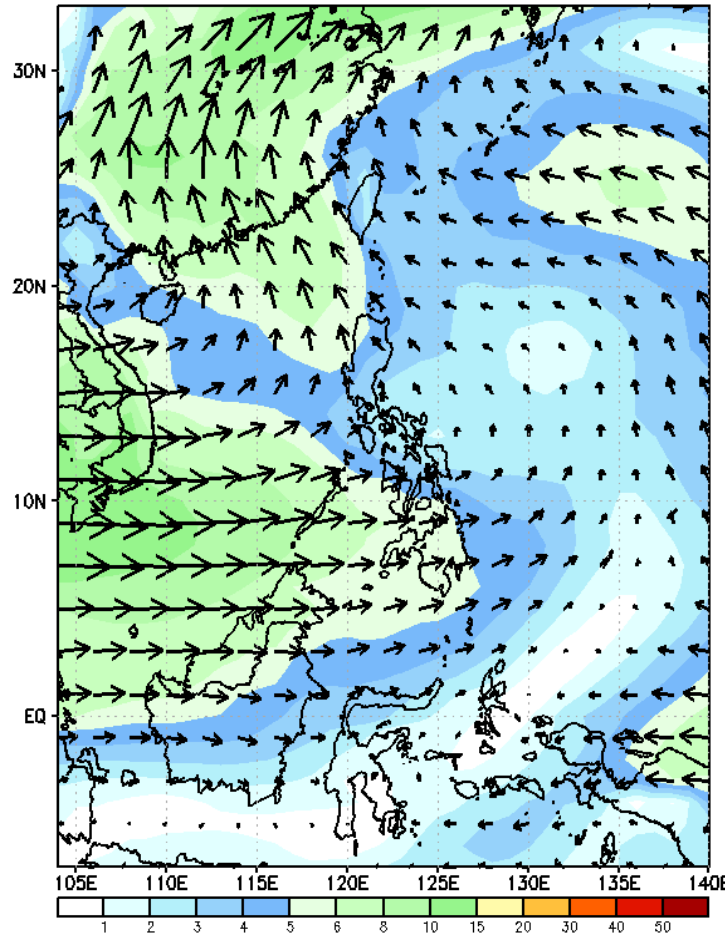
GEFS Week-1 Wind Forecasts:

Week 1: Jul 17-23, 2024

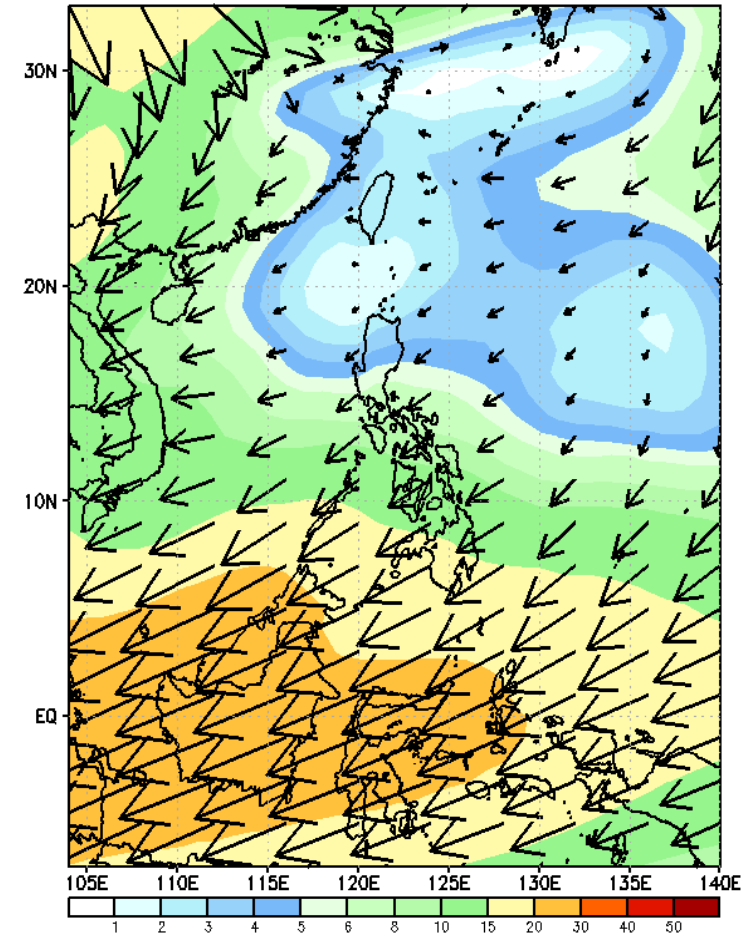
GEFS Week-1 850-hPa Wind Total
Valid: 20240717 - 20240723



GEFS Week-1 700-hPa Wind Total
Valid: 20240717 - 20240723

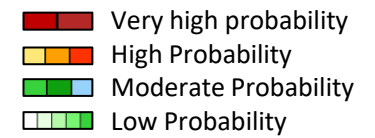


GEFS Week-1 200-hPa Wind Total
Valid: 20240717 - 20240723



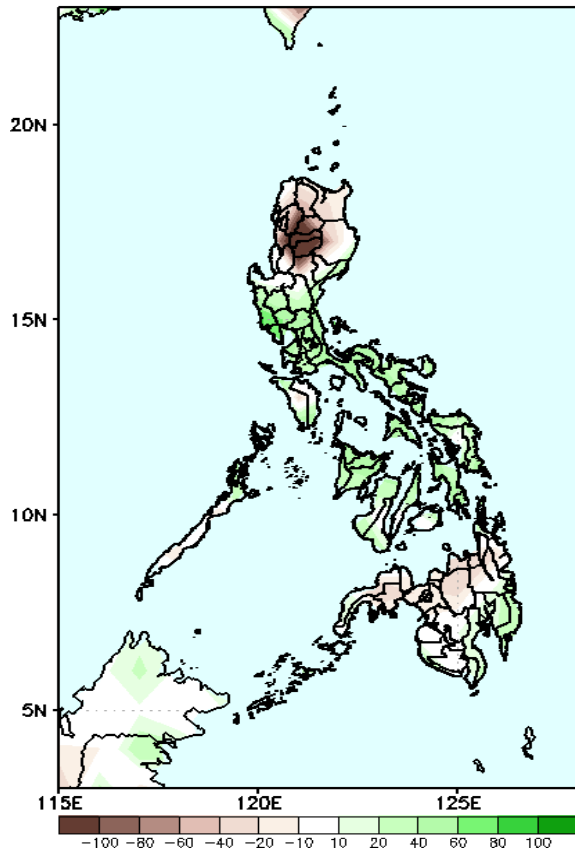
Southwest Monsoon affecting most parts of the country during the forecast period

Precipitation Anomaly and Exceedance Probability > 25/50 mm



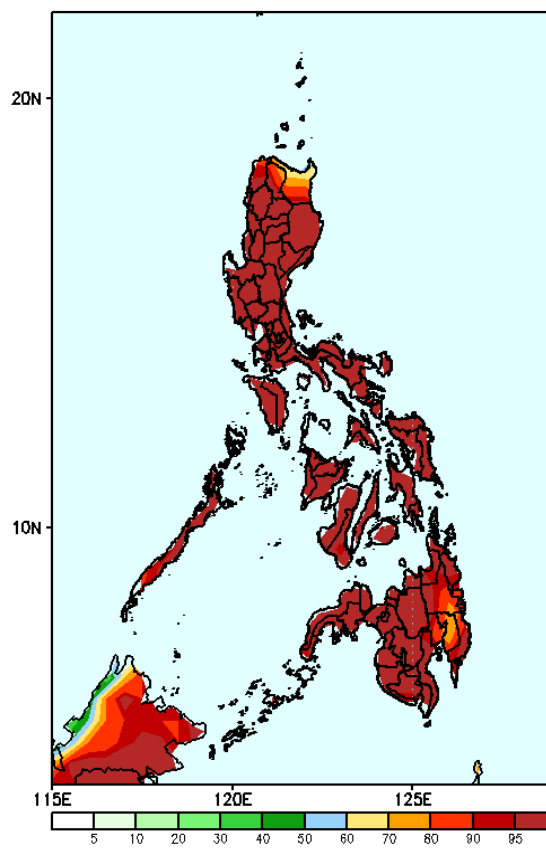
Week 1: Jul 17-23, 2024

GEFS Week-1 Precip Anomaly
Valid: 20240717 - 20240723



Rainfall deficit of more than 100mm in most parts of CAR, Ilocos Sur, and La Union; 20-40mm over the rest of Northern Luzon and most parts of Mindanao while 20-80mm increase of rainfall will be likely for the rest of the country.

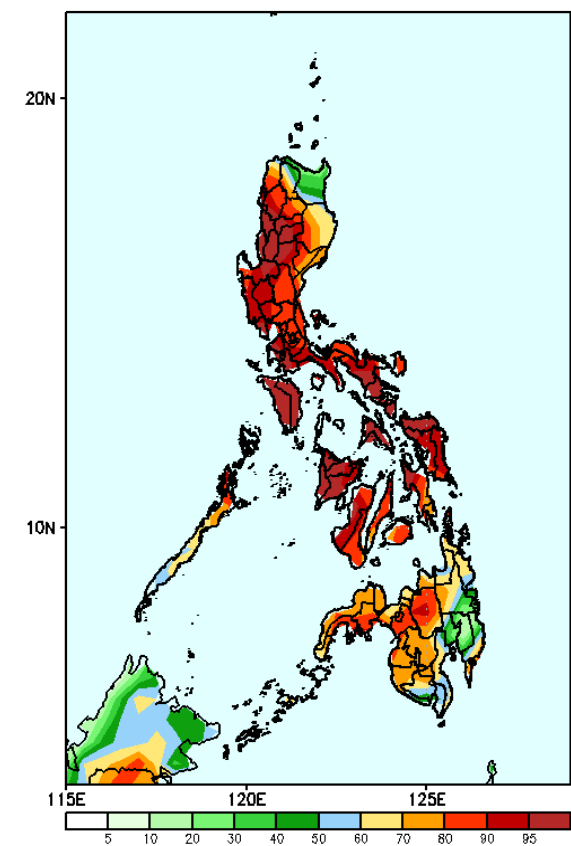
GEFS Week-1 Exceedance Prob. > 25mm
Valid: 20240717 - 20240723



Probability to Exceed 25mm

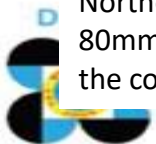
- High to very high across the country;

GEFS Week-1 Exceedance Prob. > 50mm
Valid: 20240717 - 20240723

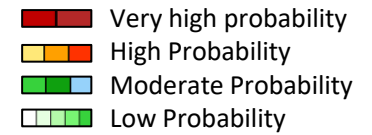


Probability to Exceed 50mm

- High to very high over most parts of Luzon and Visayas;
- Moderate to high over Cagayan, Palawan and most of Mindanao.

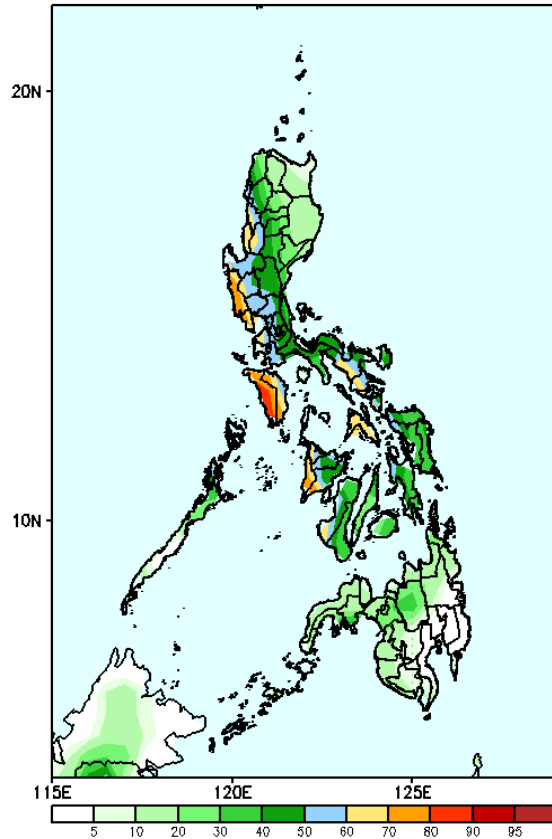


Exceedance Probability > 100/150/200 mm



Week 1: Jul 17-23, 2024

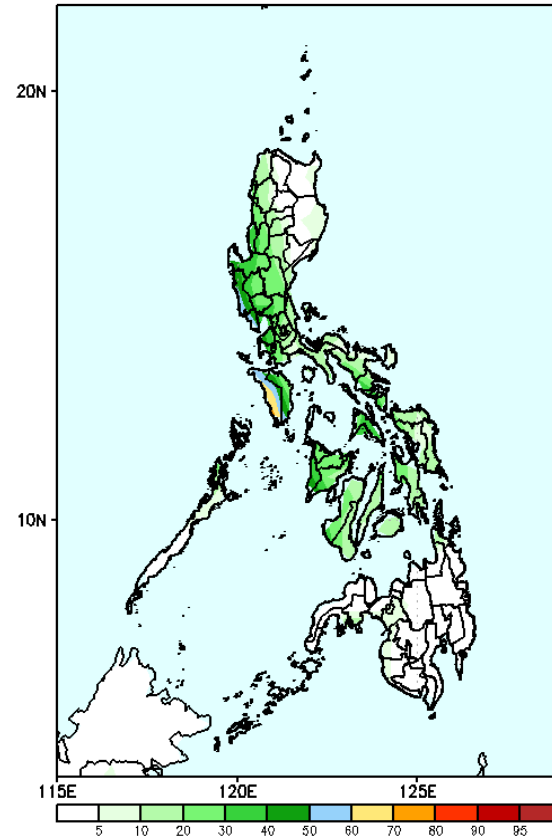
GEFS Week-1 Exceedance Prob. > 100mm
Valid: 20240717 - 20240723



Probability to Exceed 100mm

- Moderate to high over Mindoro Provinces and most of Visayas;
- Low to moderate over the rest of the country.

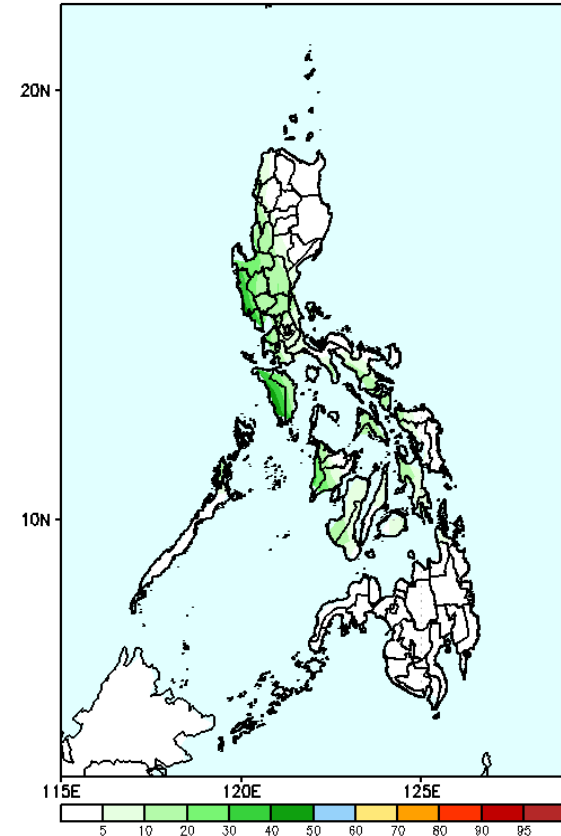
GEFS Week-1 Exceedance Prob. > 150mm
Valid: 20240717 - 20240723



Probability to Exceed 150mm

- Moderate to high over Occidental Mindoro;
- Low to moderate over Zambales and Bataan;
- Low over the rest of the country.

GEFS Week-1 Exceedance Prob. > 200mm
Valid: 20240717 - 20240723



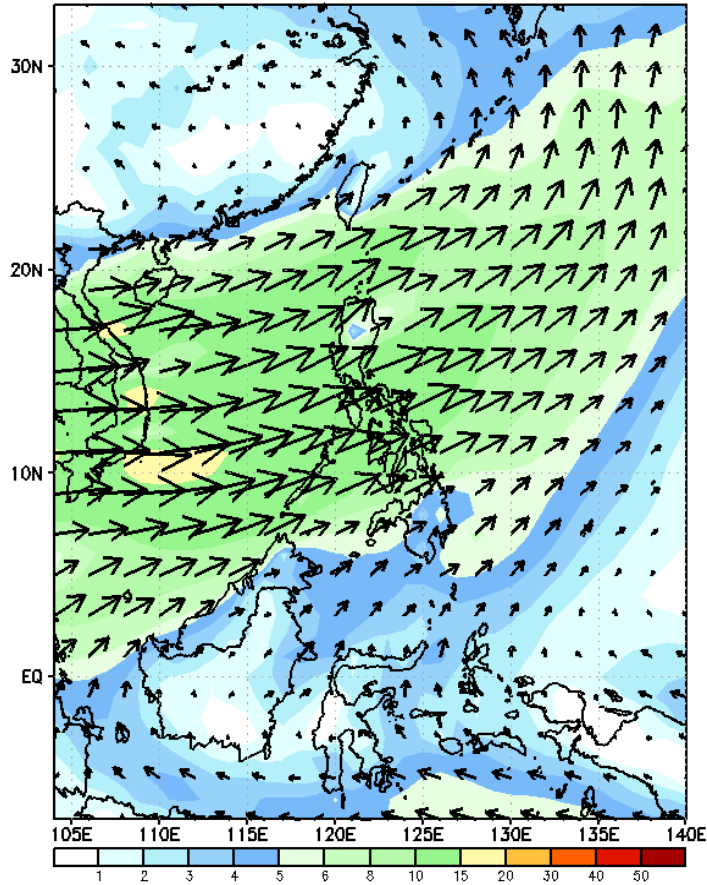
Probability to Exceed 200mm

- Low across the country.

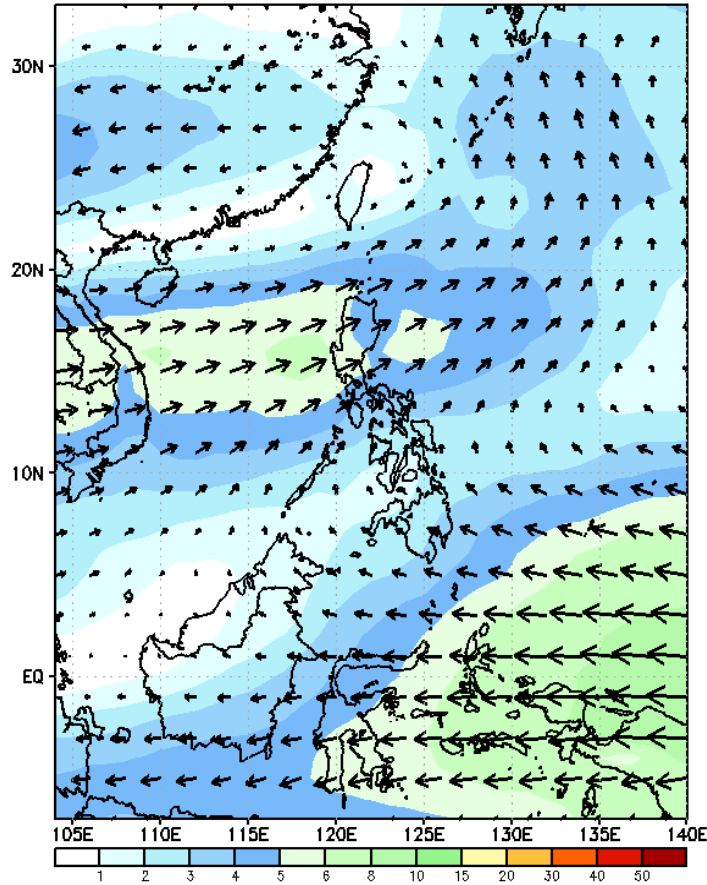
GEFS Week-2 Wind Forecasts:

Week 2: Jul 24-30, 2024

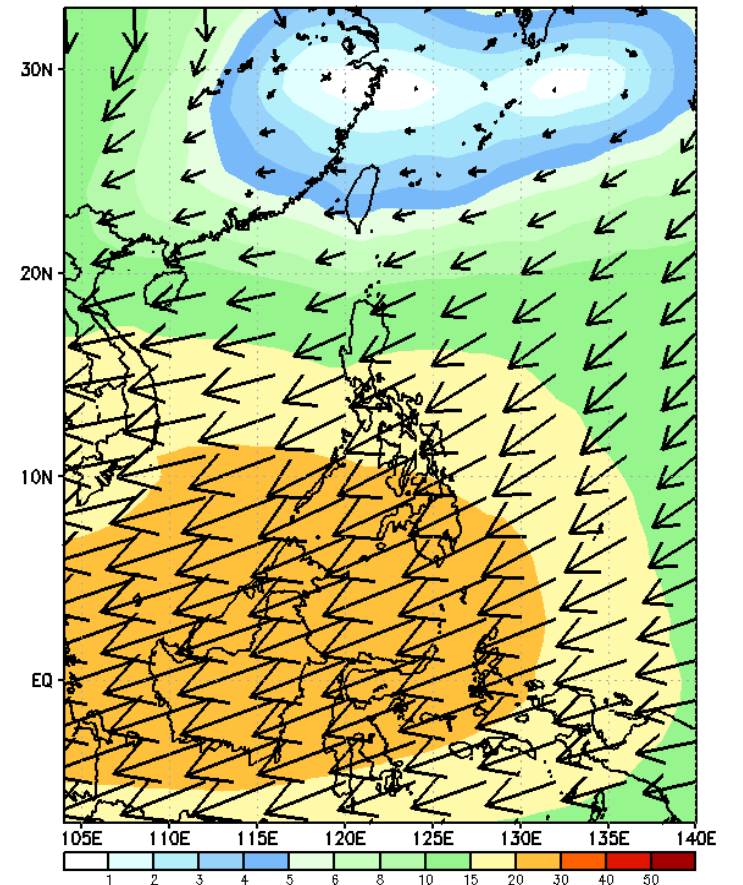
GEFS Week-2 850-hPa Wind Total
Valid: 20240724 - 20240730



GEFS Week-2 500-hPa Wind Total
Valid: 20240724 - 20240730

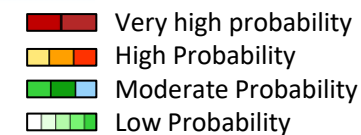


GEFS Week-2 200-hPa Wind Total
Valid: 20240724 - 20240730



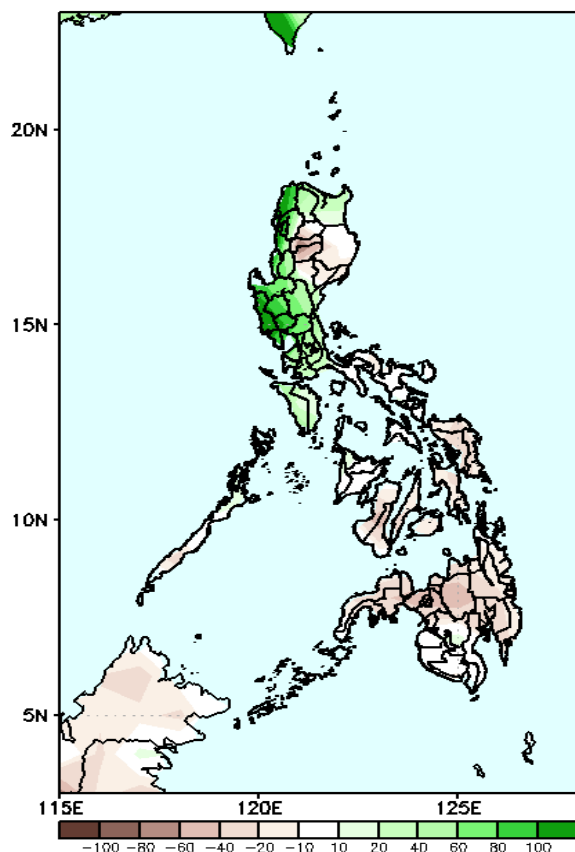
Southwest Monsoon affecting most parts of the country during the forecast period

Precipitation Anomaly and Exceedance Probability > 25/50 mm



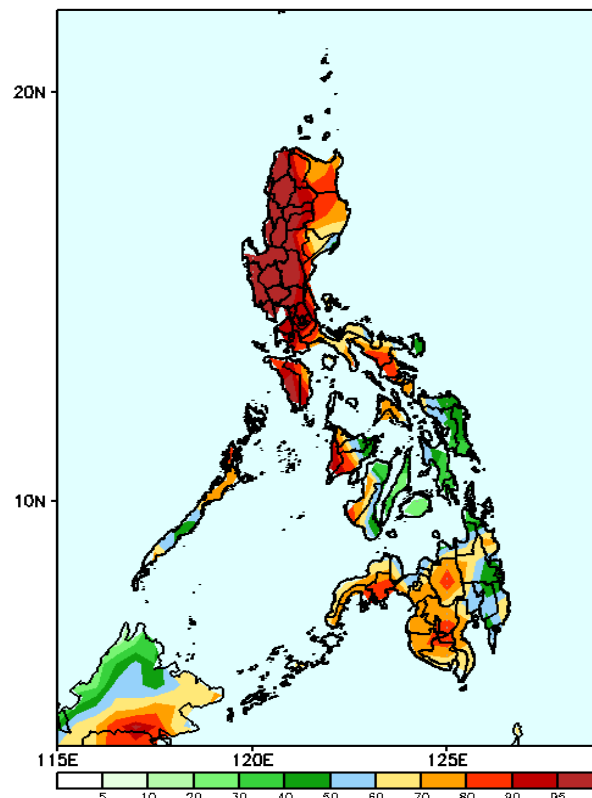
Week 2: Jul 24-30, 2024

GEFS Week-2 Precip Anomaly
Valid: 20240724 - 20240730



Increase of rainfall of 40-100mm in most parts of Western and Central Luzon and Cagayan while 20-60mm Rainfall deficit is expected for the rest of the country.

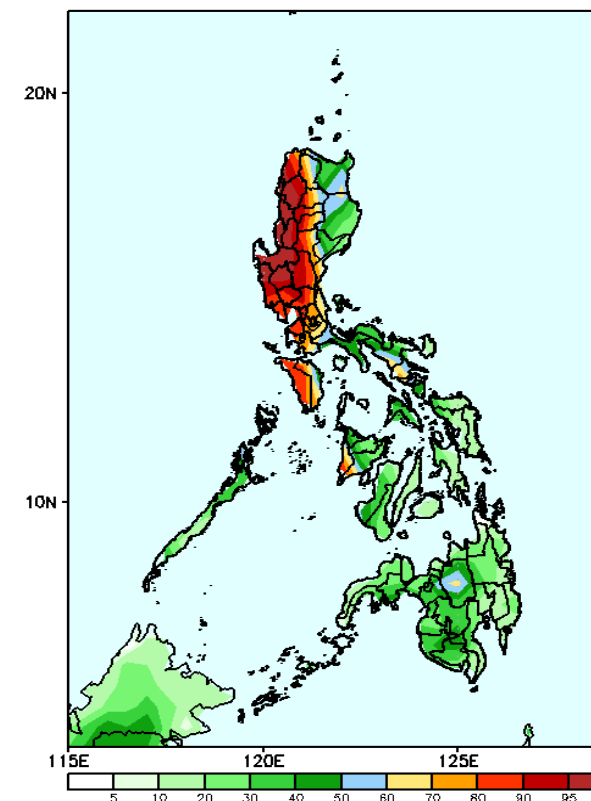
GEFS Week-2 Exceedance Prob. > 25mm
Valid: 20240724 - 20240730



Probability to Exceed 25mm

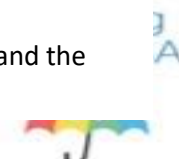
- High to very high over most parts of Luzon;
- Moderate to high over Bicol Region, Palawan, Western section of Visayas, Northern Samar and Samar and most of Mindanao;
- .

GEFS Week-2 Exceedance Prob. > 50mm
Valid: 20240724 - 20240730



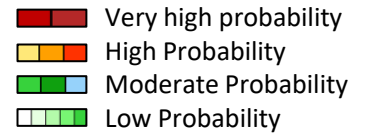
Probability to Exceed 50mm

- High to very high over Ilocos Region, western section of CAR and most of Central Luzon;
- Moderate to high over the rest of Luzon, Antique, and some parts of Iloilo and Bukidnon;
- Low to moderate over most of Cagayan Valley and the rest of Visayas ad Mindanao.

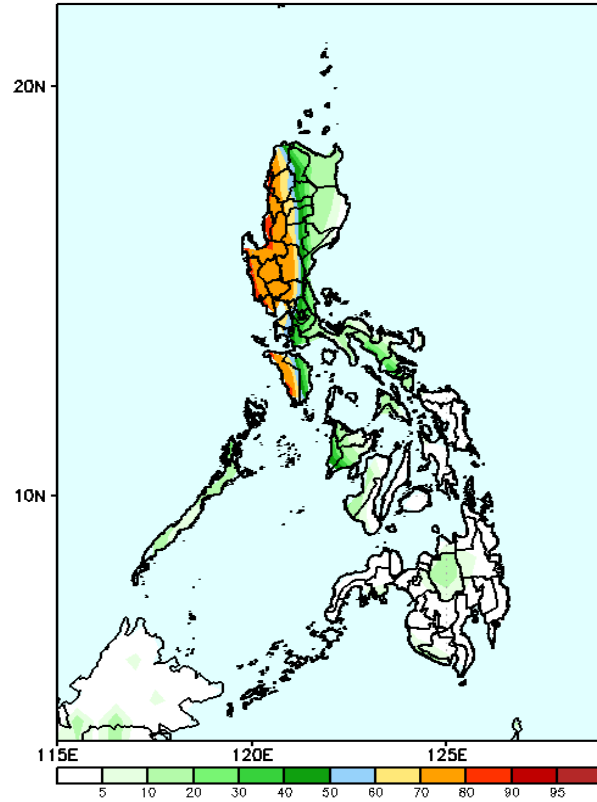


Exceedance Probability > 100/150/200 mm

Week 2: Jul 24-30, 2024



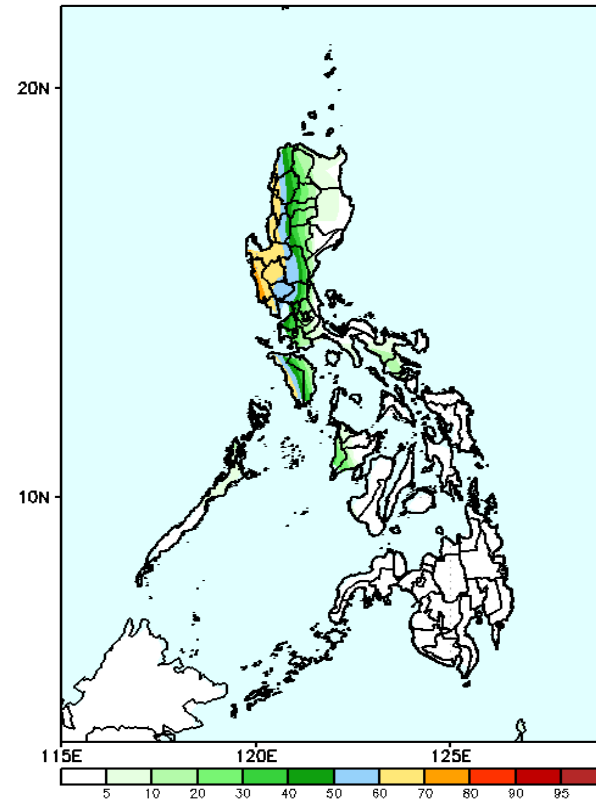
GEFS Week-2 Exceedance Prob. > 100mm
Valid: 20240724 - 20240730



Probability to Exceed 100mm

- Moderate to high over most of western Luzon and western portions of CAR;
- Low to moderate over the rest of Luzon;
- Low over the rest of the country.

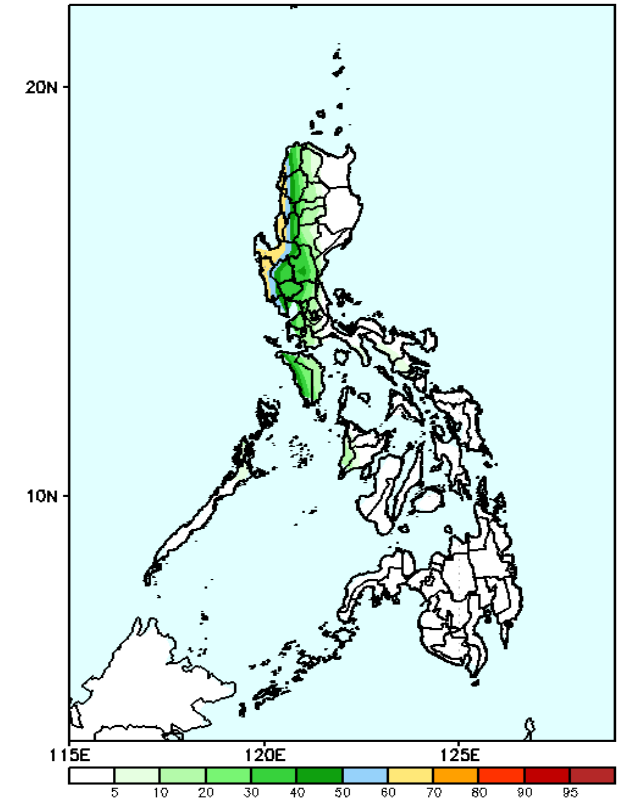
GEFS Week-2 Exceedance Prob. > 150mm
Valid: 20240724 - 20240730



Probability to Exceed 150mm

- Moderate to high over most of Ilocos Region, Abra, Benguet, Zambales, Tarlac and Bataan;
- Low to moderate over the rest of CAR and Central Luzon and Occidental Mindoro;
- Low over the rest of the country.

GEFS Week-2 Exceedance Prob. > 200mm
Valid: 20240724 - 20240730

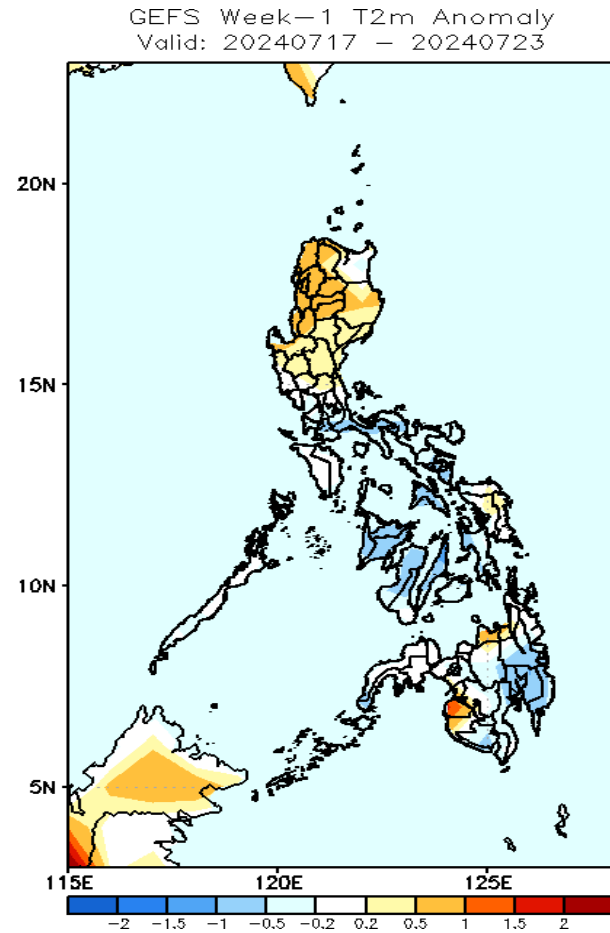


Probability to Exceed 200mm

- Moderate to high over most of Ilocos Region, Benguet, Zambales and Bataan;
- Low to moderate over the rest of CAR and Central Luzon;
- Low over the rest of the country.

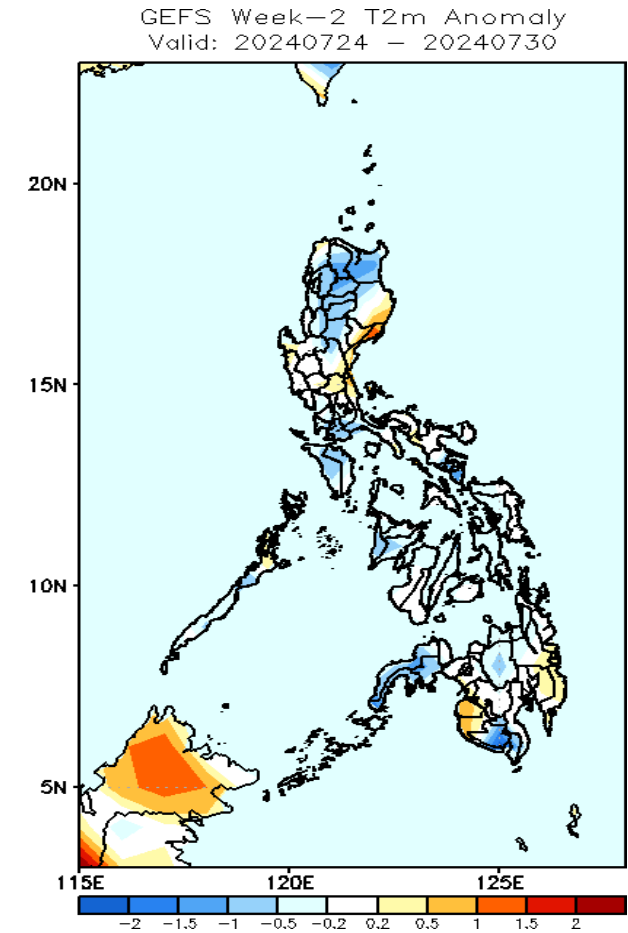


GEFS Week-1 & 2 Forecasts: T2m Anomaly



2m Temperature Week 1: Jul 17-23, 2024

Near to slightly warmer than average surface air temperature will likely be experienced in most parts of Northern and Central Luzon, Samar provinces, Misamis Oriental, Maguindanao and Sultan Kudarat while the rest of the country will likely have slightly cooler to cooler than average surface air temperature.



2m Temperature Week 2: Jul 24-30, 2024

Near to cooler surface air temperature will likely be experienced in most parts of the country except in Aurora, parts of Isabela and Quezon, Davao Region, Maguindanao and Sultan Kudarat where near to slightly warmer than average temperature is expected.